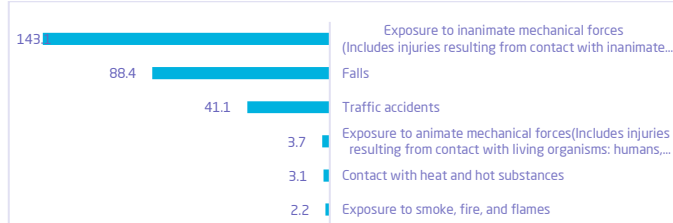


Risk Awareness Index among workers (aged 18 years and above) reached 76.7%

According to administrative records, the occupational injury rate among workers aged 15 years and above was (245) non-fatal injuries and (1.3) fatal injuries per 100,000 workers, excluding road traffic accidents. In the workplace, according to survey respondents, 51.8% of workers aged 18 years and above reported the availability of preventive measures implemented by their workplace. Additionally, 46.6% reported the availability of workplace initiatives aimed at facilitating daily work tasks, such as providing equipped rest areas or initiatives to raise nutritional awareness. Meanwhile, 34.5% reported the availability of workplace resources related to personal health, such as access to a professional health physician or a psychologist. The results also showed that prolonged standing (for at least 4 hours per day) is among the most common health risks faced by workers aged 18 years and above, at 25.3%. And the results indicated that over the past 12 months, the most common work-related health problem was "work-related stress" at 6% followed by "eye and vision problems" at 3%. In addition, the Awareness Index of workers stood at 76.7%

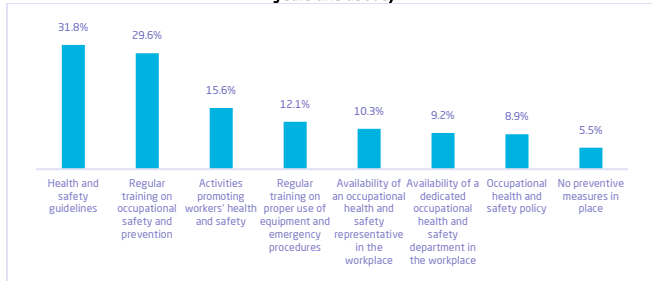
Occupational injury rates among workers (aged 15 years and above) reached 245 non-fatal injuries and 1.3 fatal injuries per 100,000 workers

Figure 1: Occupational injury rates among workers (aged 15 years and above) by injury type



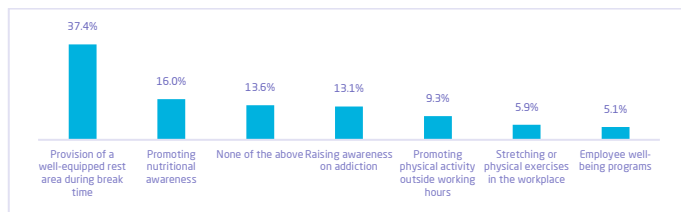
51.8% of workers aged 18 years and above report the availability of preventive measures implemented by their workplace

Figure 2: Preventive measures implemented by workplaces as reported by workers (aged 18 years and above)



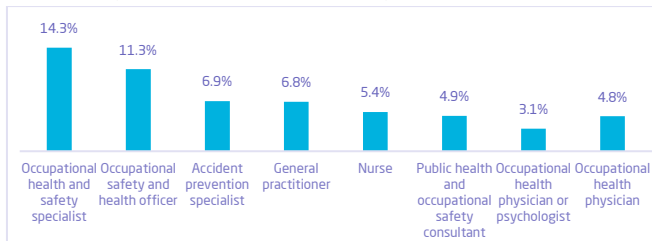
46.6% of workers aged 18 years and above report that their workplace provides at least one initiative to facilitate daily work tasks

Figure 3: Workplace initiatives to facilitate daily work tasks for workers (aged 18 years and above)



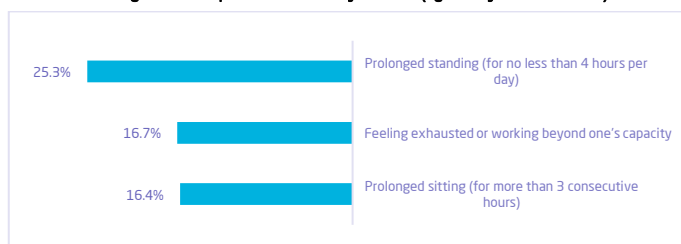
34.5% of workers aged 18 years and above report having access to at least one workplace resource related to their personal health

Figure 4: Workplace resources supporting workers' personal health



Prolonged standing (for at least 4 hours per day) is the most common occupational risk faced by workers aged 18 years and above in the workplace

Figure 5: Workplace risks faced by workers (aged 18 years and above)



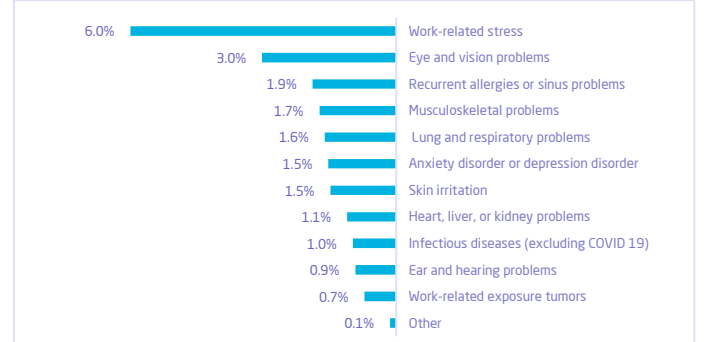
The highest-scoring item in the Awareness Index was workers' knowledge of how to handle all types of risks when they occur, at 79.8%

Figure 6: Workers' Awareness Index (aged 18 years and above) by awareness scale items



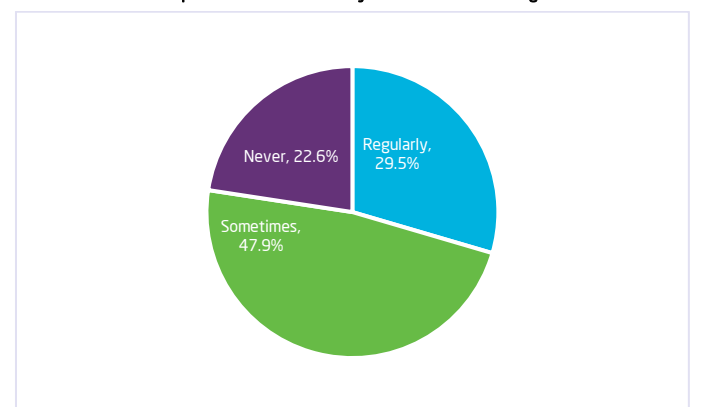
Relative distribution of work-related health problems during the past 12 months among workers (aged 18 years and above)

Figure 7: Relative distribution of work-related health problems among workers (aged 18 years and above)



Relative distribution of workers (aged 18 years and above), by the extent of discussion of occupational health and safety between managers and employees

Figure 8: Relative distribution of workers (aged 18 years and above) by frequency of occupational health and safety discussions with managers



Disclaimer

Estimates of occupational health and safety statistics are based on self-completion data provided by participants through in-person household visits conducted as part of the National Health Survey 2025, except for the occupational injury rate, which is calculated using administrative records from the National Council for Occupational Safety and Health 2025.

Methodology and quality

This publication presents occupational health and safety indicators for workers aged 18 years and above based on the results of the National Health Survey 2025, and administrative data from the National Council for Occupational Safety and Health.

For more details on the survey methodology, please click on the [link table](#)