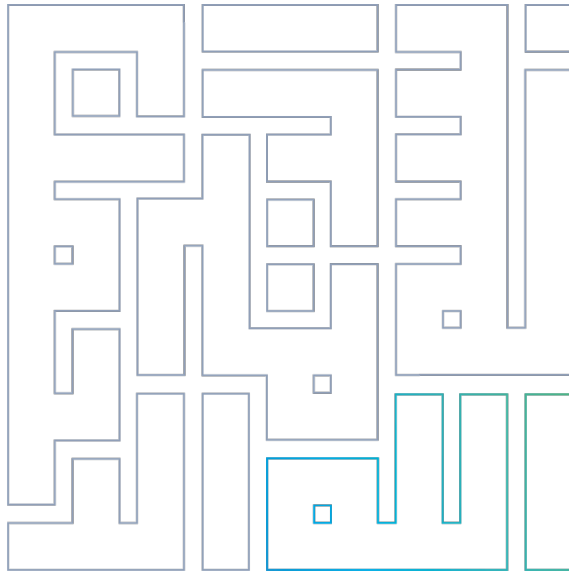




# Saudi Family Statistics

## Report 2024



# Table of Contents

03	Introduction
04	Concepts and terminology
05	Saudi households' demographic characteristics
08	Saudi household and dwelling characteristics
10	Saudi household and surrounding environment
12	Saudi household and energy
13	Saudi household and ICT
14	Conclusion

## Introduction

Saudi Vision 2030 aspires to "build a vibrant society with strong foundations, aiming to enhance and develop social care principles to foster a robust and productive community." Families play a pivotal role in achieving this vision due to their significant contributions to the nation's development journey.

In line with the mission of the General Authority for Statistics (GASTAT) to provide updated statistical products and services with added value, characterized by accuracy, comprehensiveness, and credibility, that meet the requirements of international, regional, and local organizations, as well as the objectives of Vision 2030, and in accordance with the best international standards and practices in the statistical sector to support decision-making, and to realize the authority's vision of becoming the most distinguished and innovative statistical reference supporting economic and social development in the Kingdom, the General Authority for Statistics is pleased to present the Saudi Family Statistics Report.

This report is supported with data and visualizations. It provides key statistical indicators related to families, including their types, sizes, distribution by age groups, breadwinning families, types of housing, distribution by administrative regions, and housing ownership rates. It also covers environmental and energy-related indicators. This report is based on data from the Saudi Census 2022 and surveys conducted by GASTAT.

## Concepts and Terminology

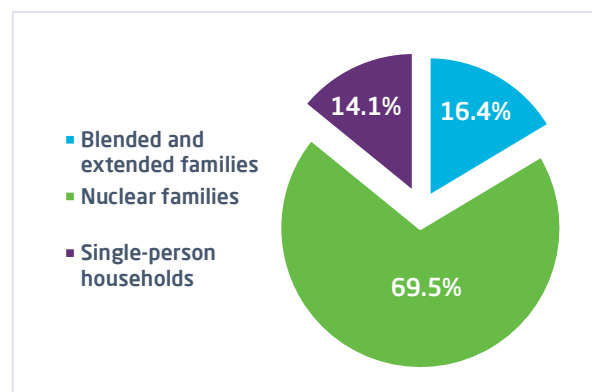
<b>Household</b>	A single individual or a group of individuals, whether related or unrelated, who share the same residence and meals.
<b>Single-person household</b>	A household consisting of only one individual.
<b>Nuclear family</b>	A family consisting of a father, mother, and their children.
<b>Blended family</b>	A family that consists of a nuclear family along with individuals who live with them but are not related by blood.
<b>Extended family</b>	A family that includes grandparents, parents, children, and other relatives.
<b>Head of household</b>	The person who is considered the leader of the household, resides with the family, and is responsible for making decisions. The head of household must be at least 15 years old.
<b>Average household size</b>	The average number of people in a household in a specific area. It is calculated by dividing the total population living in households by the total number of occupied housing units.
<b>Dependency ratio</b>	A measure of the age structure of a population. It is calculated by dividing the number of individuals who are likely to be "dependent" on others for their daily support—youth and elderly—by the number of individuals capable of providing this support.
<b>Organic products</b>	Products that are produced using methods that do not involve artificial industrial inputs and do not contain toxic chemical elements.
<b>Median age</b>	The age at which half of the population is older, and the other half is younger.
<b>Average Age</b>	The total age of the population / total population.

# 1.Saudi Household's demographic characteristics

## 1.1. Type of Saudi household

According to the 2024 Housing Survey data, Saudi households accounted for 51%, while the results of the 2022 Saudi Census showed that Saudi households represented 50.8% of the total households in the Kingdom. Among Saudi households, those consisting of two or more members made up 85.9%. Of these, nuclear families represented 70%, while extended and composite families accounted for 16%. Single-person households made up 14%. Figure 1 and Table 1 show the relative distribution by sex with a detailed breakdown of age groups for Saudi single-person households.

Figure (1):



Source: Saudi Census 2022

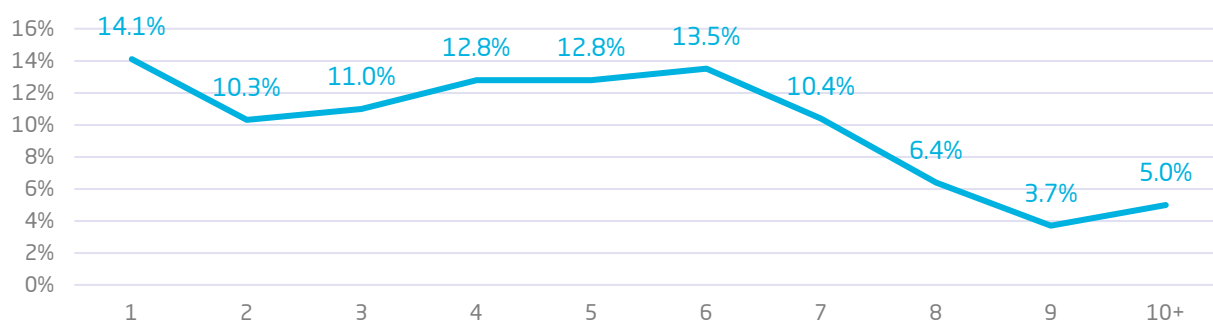
Table (1)

Age group	Male	Female
15-24	26.4%	11.4%
25-34	41.6%	23.6%
35-44	17.1%	17.5%
45-54	7.3%	12.1%
55-64	4.0%	13.6%
65-74	1.8%	12%
75+	1.7%	9.8%
<b>Total</b>	<b>100%</b>	<b>%100</b>

## 1.2. Saudi household size

Household size data is a vital indicator for understanding the demographic composition of society and tracking changes in household sizes over time. According to the 2024 Housing Survey data, the average size of Saudi households was five individuals. In comparison, the 2022 Saudi Census showed that the average household size across all types of Saudi households was 4.8 individuals. Households consisting of six members made up 13.5%, while those with four or five members accounted for 12.8%. Single-person households represented 14.1%. (Figure 2)

FIGURE(2): RELATIVE DISTRIBUTION OF SAUDI HOUSEHOLDS IN 2022 BY NUMBER OF INDIVIDUALS



Source: Saudi Census 2022

### ▪ Age group distribution of Saudi household members

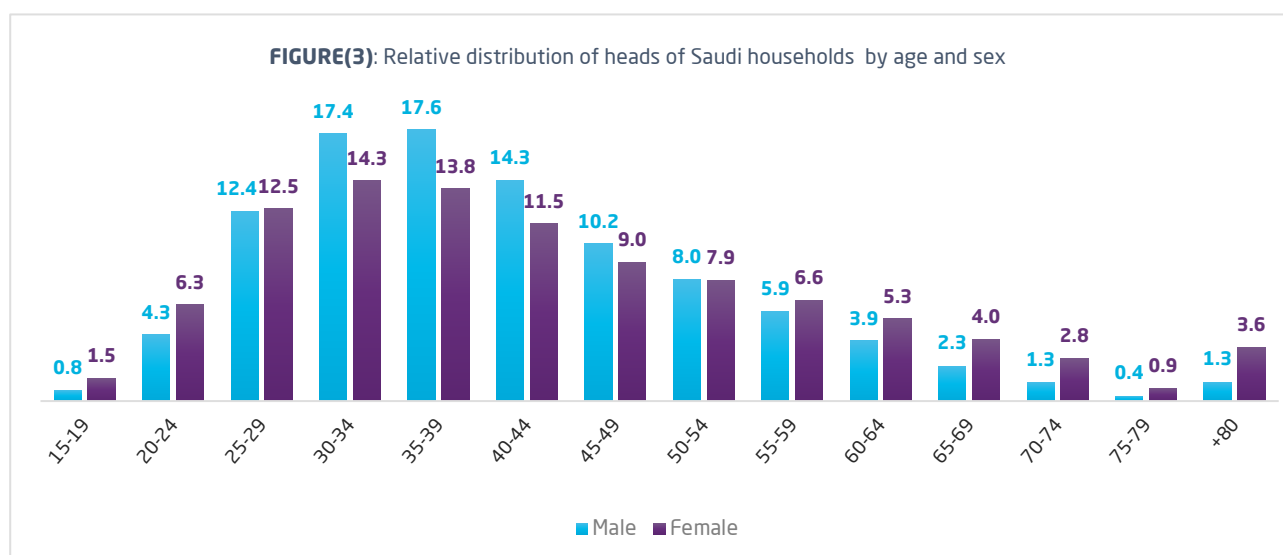
Studying household characteristics requires examining the characteristics of individuals, as they are the fundamental component of a household. The 2024 Population estimate revealed that the average age in Saudi society members is 26.6 years, while the median age is 23.5 years. In comparison, the 2022 Census results showed an average age of 25.4 years and a median age of 22 years. Additionally, Individuals under the age of 35 make up 71% of the population. Table 2 illustrates the age group distribution of Saudi household members according to 2024 Housing survey data:

Age group	0-9	10-19	20-29	30-39	40-49	50-59	60-69	70-79	80+
Percentage	18.2%	21.7%	18.0%	16.9%	12.4%	7.3%	3.8%	1.4%	0.4%

Source: Saudi Census 2022

### ▪ Relative distribution of Saudi household heads by sex and age groups.

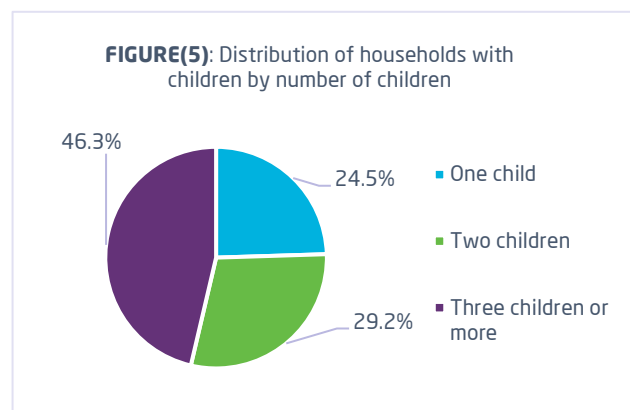
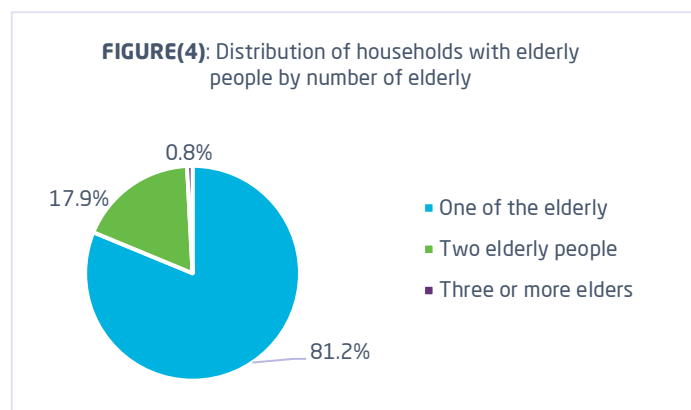
Males make up the majority of Saudi household heads, accounting for 83.1%, while females represent 16.9%. The highest percentage of male household heads is in the age group 35-39 years, at 17.6%, while the highest percentage of female household heads is in the age group 30-34 years, at 14.3%.



Source: Saudi Census 2022

### 1.3. Saudi household and dependent members

According to the 2024 population estimates, the dependency ratio for Saudi households reached 59%. In comparison, the results of the 2022 Saudi Census indicated that the dependency ratio was 62%. Child dependency (under the age of 15) represented the largest share of household living expenses, accounting for 56.3%, while 5.7% of households were supporting elderly members aged 65 and above.



Source: Saudi Census 2022

#### ▪ Dependency rate by number of dependents

When examining child and elderly dependency rates by their numbers, 46.3% of Saudi households support three or more children, 29.1% support two children, and 24.5% support one child. Regarding elderly dependents, 82% of households support three or more elderly individuals, 17.9% support two elderly individuals, and 81.2% support one elderly individual. Refer to (Figures 4-5).

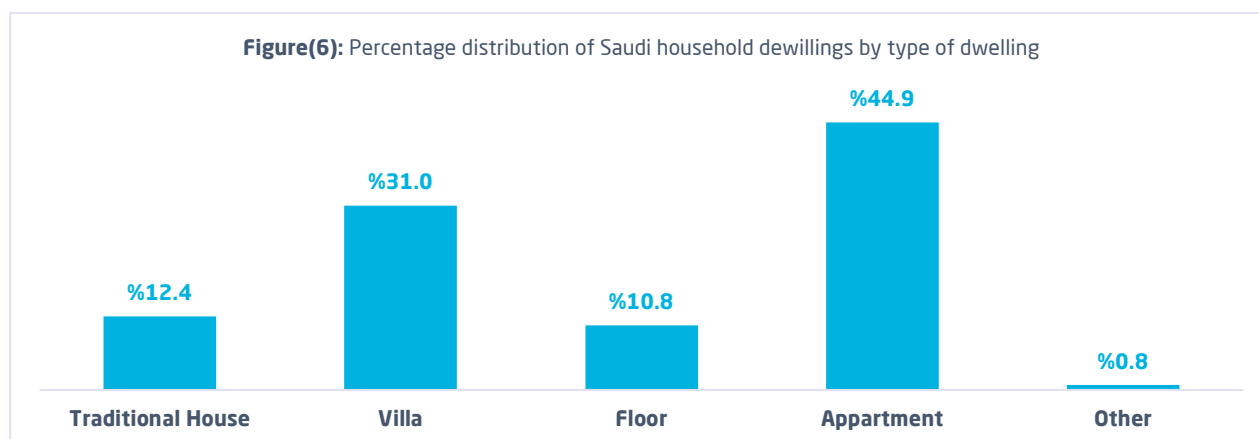


## 2. Saudi household and dwelling characteristics

### 2.1. Saudi households and dwelling diversity

According to the 2024 Housing survey data, the total number of housing units for Saudi households amounted to 4 million dwellings ,( including villas, villa floors, traditional houses, floors in traditional houses, and apartments) Among these, 44.9% of households reside in apartments, while 31.0%% live in villas.(

**Figure 6)**

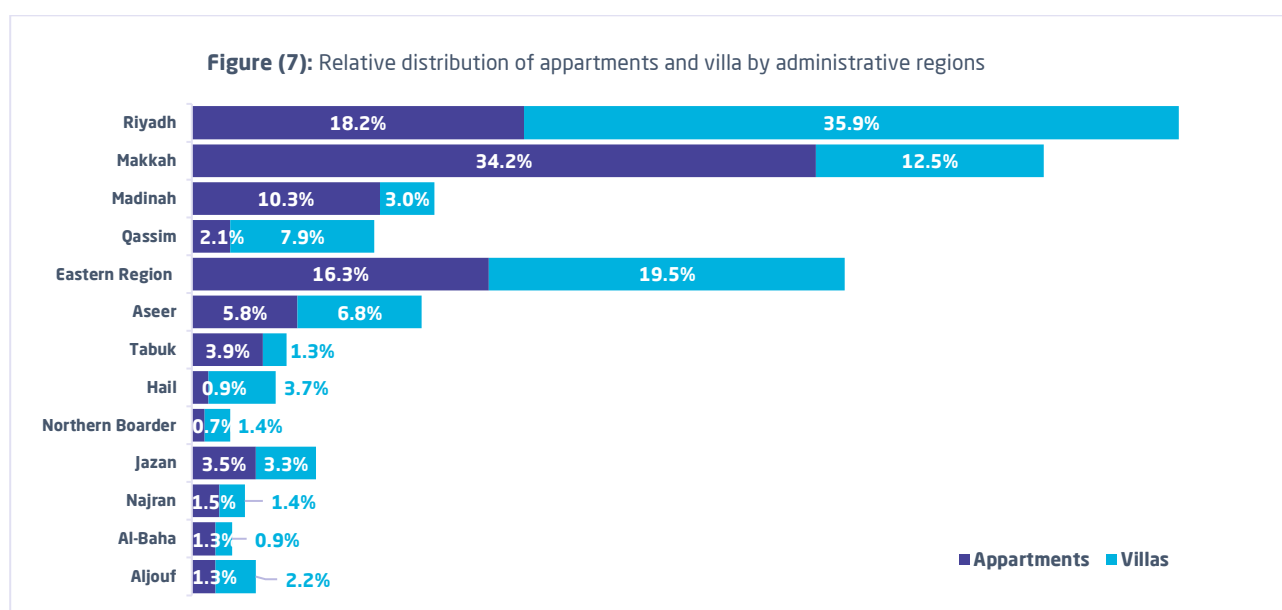


Source: Housing survey 2024

### 2.2 Distribution of apartments and villas by administrative region

Riyadh region recorded the highest percentage of households residing in villas, accounting for 35.9%, followed by the Eastern Region at 19.5% and Makkah region at 12.5%. As for households living in apartments, Makkah region topped the list with 34.2%, followed by Riyadh at 18.2% and the Eastern Region at 16.3%.

(Figure7) illustrates the relative distribution of apartments and villas by administrative regions for 2024.

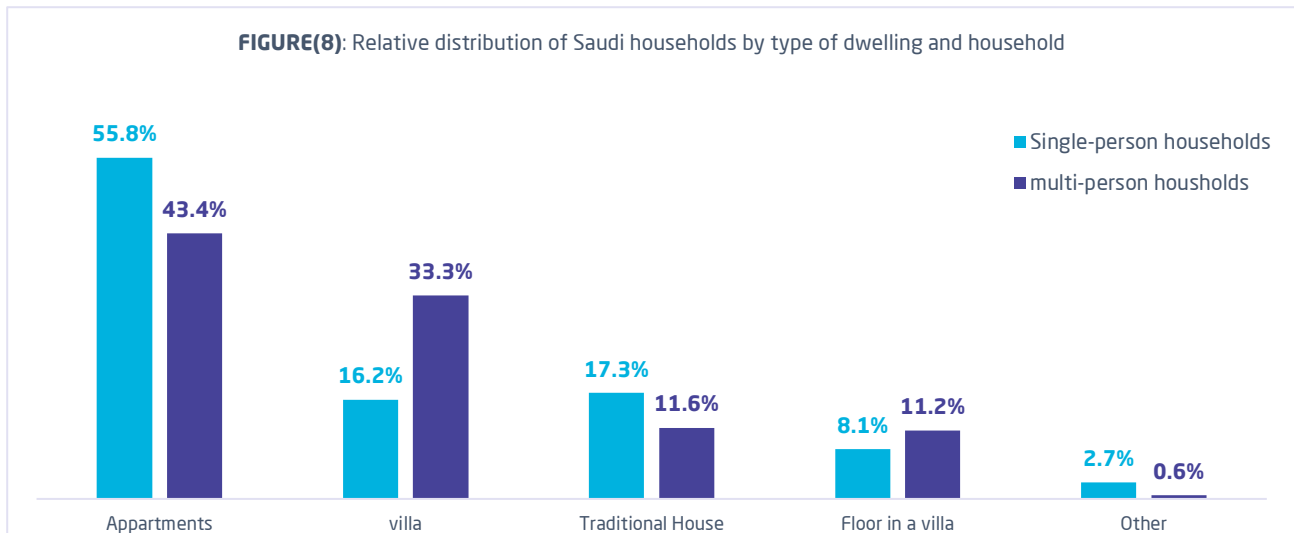


Source: Housing survey 2024

### ▪ Type of dwelling by type of household

Data of 2024 Housing survey revealed that 55.8% of single-person households reside in apartments, while 16.2% live in villas. For multi-member households, 43.4% reside in apartments, and 33.3% live in villas.

(Figure8) illustrates the relative distribution of Saudi households by type of dwelling and household composition.

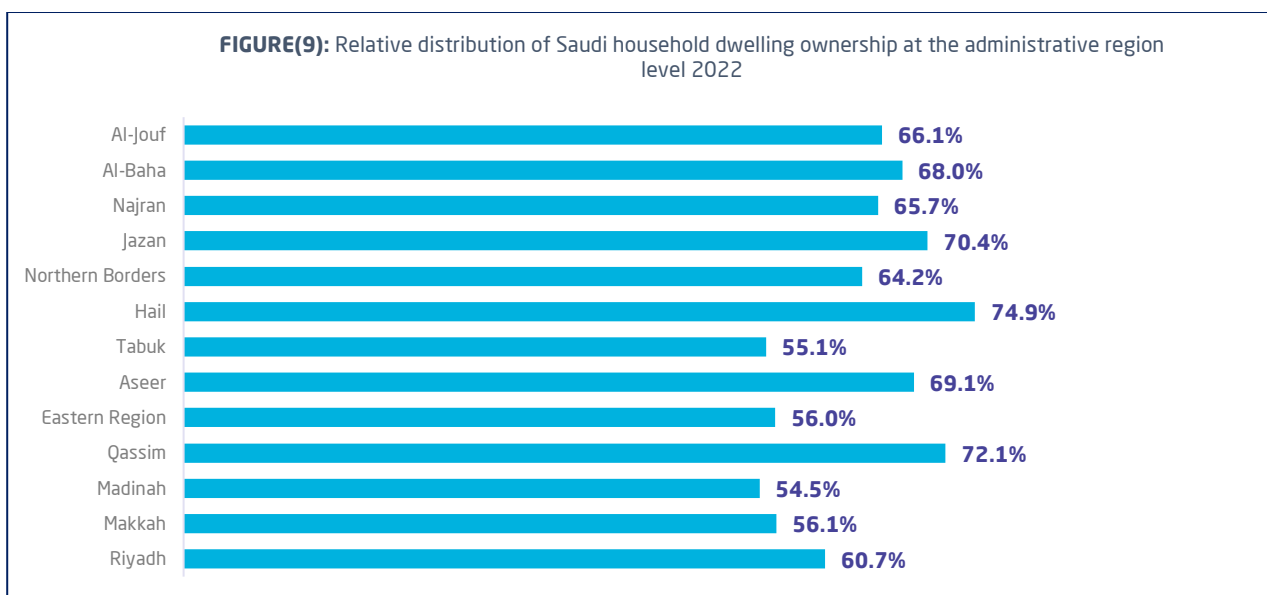


Source: Housing survey 2024

### ▪ Saudi households and property ownership by administrative region

Recognizing that the family is the heartbeat of society, the government has made it a priority under Vision 2030 to increase the property ownership rate among Saudi households and ensure they have access to all the comforts and security they need. Efforts have been made to make it easier for Saudi households to obtain financial support for property ownership. According to Saudi Census 2022, the property ownership rate among Saudi households stands at 60.6%.

The following chart shows the distribution of homeownership across Saudi Arabia's administrative regions.



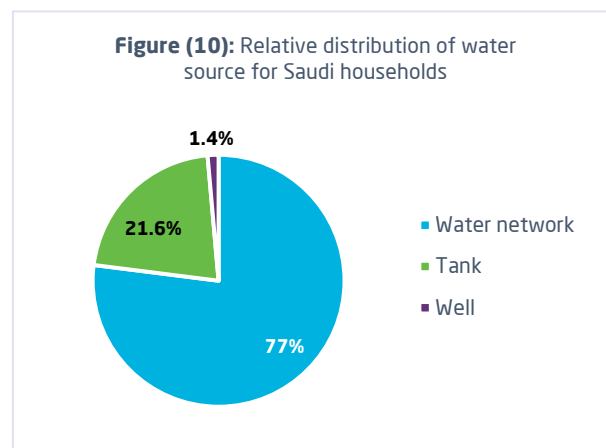
Source: Saudi Census 2022

### 3. Saudi household and surrounding environment

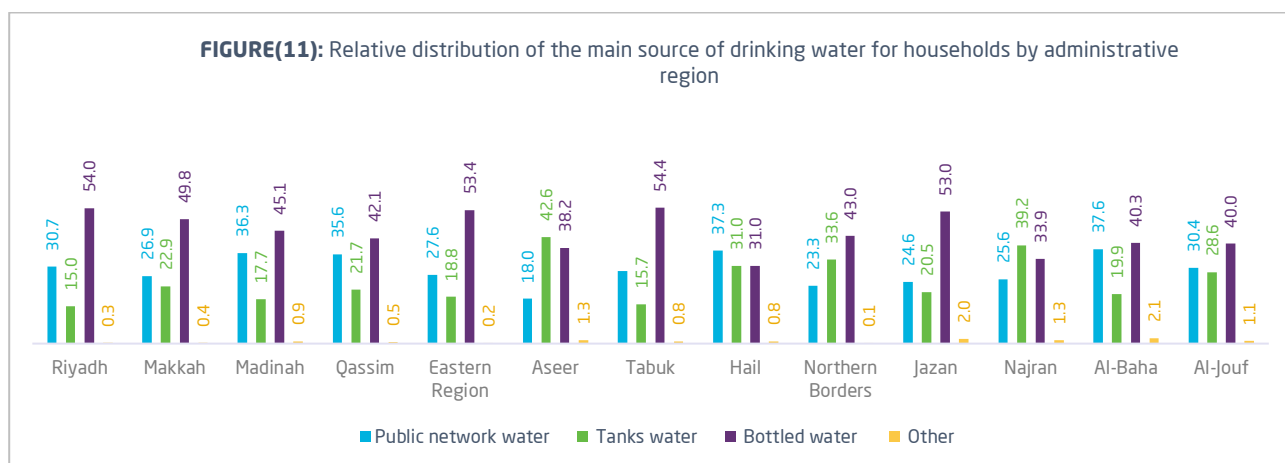
#### 3.1 Saudi household and environmental indicators

Source: Housing survey 2024

Clean and safe water is one of the most essential elements for life and health, and access to it is a fundamental condition for the prosperity of communities. According to the 2024 Housing Survey, the vast majority of Saudi households rely on the public water network as their primary source of water within the dwelling, accounting for 77%. This is followed by water from tankers (white water) at 21.6%, well water at 1.4%, Figure (10). Regarding drinking water, the results of the 2023 Household Environment Survey conducted by the General Authority for Statistics revealed that bottled water is the most commonly used source, accounting for 57.2%. This is followed by water from the public network at 23.5%, tanker water at 18.6%, and other water sources at 0.6%, including covered wells, open wells, springs, and surface water. The highest percentage of households using bottled water as their primary drinking water source was found in the Eastern region at 62.7%, followed by Riyadh region at 60.3%. The highest percentage of households using the public water network as their primary source of drinking water was found in Madinah region at 34.8%, followed by Hail region at 32.5%.



(Figure11) illustrates the distribution of primary drinking water sources for households at the level of administrative regions.

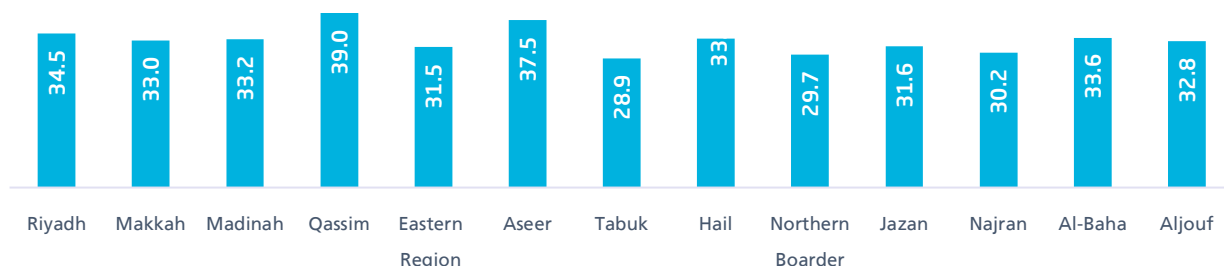


Source: Household Environment Survey 2023

#### ■ Use of water conservation devices or tools in the dwelling

Vision 2030 aims to encourage the use and rationalization of water consumption. As part of this effort, the vision introduced "Qatra" water conservation program as one of the most important development programs being implemented. The program's impact on society and families is evident in raising awareness about ways to conserve water at home. According to the data, 34.3% of households in the Kingdom use water-saving devices or tools. The highest percentage of households using such devices is in Qassim region at 39%, followed by Aseer region at 37.5%.

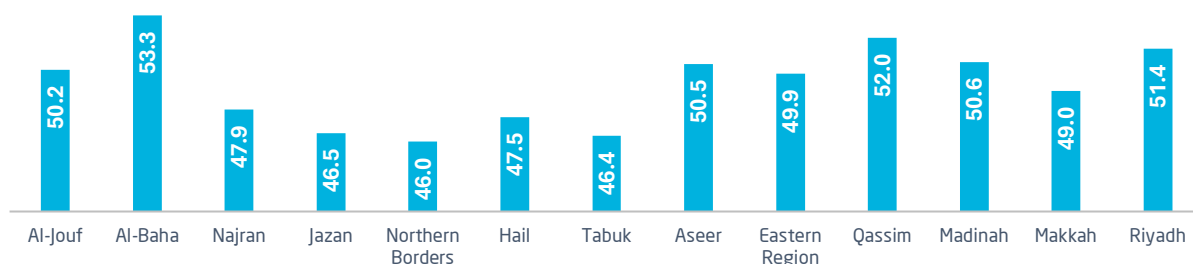
The following graph (Figure12) illustrates the distribution of households using water-saving devices across different administrative regions.

**Figure 12:** Percentage distribution of the use of water conservation devices by administrative region.

Source: Household Environment Survey 2023

### Households and purchase of organic food products

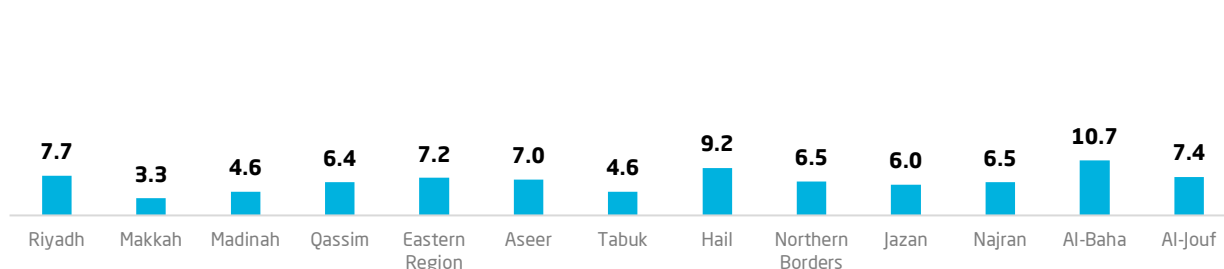
According to the data of Household Environment Survey 2023 conducted by the General Authority for Statistics, 52.7% of households purchase organic food products. The highest percentage of households purchasing these products was recorded in Al-Baha region, with 53.3%, followed by Qassim region at 52.0%. (Figure13) illustrates the distribution of households purchasing organic food products across different administrative regions:

**Figure 13:** Relative distribution of households' purchase of organic food products at dwelling by administrative regions

Source: Household Environment Survey 2023

### Households having gardens in the dwelling

According to the data of Household Environment Survey 2023, the percentage of households with gardens is 6%. Al-Baha region has the highest percentage of households with gardens, at 10.7%, followed by Riyadh region with 7.7%. (Figure14) illustrates the distribution of households with gardens across the administrative regions.

**FIGURE(14):** Relative distribution of having a garden in the dwelling at the administrative region level

Source: Household Environment Survey 2023

## 4. Saudi household and energy

### 4.1. Saudi household and energy indicators

- **Households connected to electricity**

According to the data from the data of Household Energy Survey 2023 conducted by the General Authority for Statistics, the percentage of households connected to electricity across the Kingdom reached 99.9%, while 0.1% of households are not connected. The main source of electricity is the public network, accounting for 98.3%, and 1% comes from various other sources, including solar energy systems installed privately and private generators.

- **Households interested in reducing and rationalizing electricity consumption.**

The results of the Household Energy Survey 2023 showed that the percentage of households interested in reducing and rationalizing electricity consumption at the household level across administrative regions reached 92.8% of the total number of households. Al-Jouf region had the highest percentage at 95.4%, followed by the Al-Baha region at 93.1%.

- **Households that follow energy-saving guidelines when using electrical devices.**

The government introduced several initiatives to promote energy conservation and efficient management, including the King Salman Renewable Energy Initiative, the Saudi Energy Efficiency Center, and the National Energy Services Company (Tarsheed) program. These initiatives have had a significant impact on energy conservation across the regions of the Kingdom. According to the 2023 Household Energy Survey data, the percentage of households following energy-saving guidelines when using electrical devices was 86.%. Riyadh region recorded the highest percentage of compliance with these guidelines, reaching 88.1%, followed by the Northern Borders region with 87.8%.

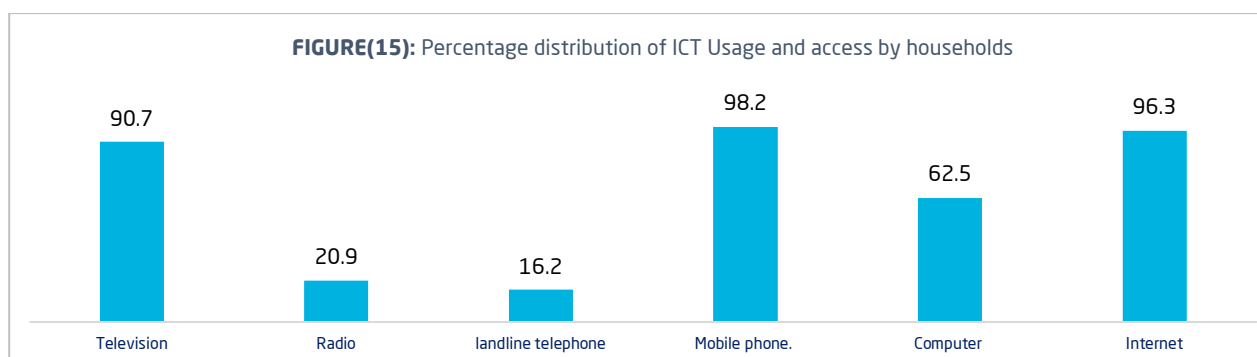
## 5. Saudi household and ICT

### 5.1. Saudi household and ICT indicators

#### ▪ ICT usage and access for households

The Kingdom has witnessed a significant transformation in the field of information and communication technology, ranking second globally among the G20 countries in the 2021 "Digital Competitiveness" report issued by the European Center for Digital Competitiveness. According to the results of the ICT Access and Usage Survey for Households and Individuals conducted by the General Authority for Statistics in 2021, the following usage rates were reported: 98.2% of households used mobile phones, 62.4% used computers, 96.9% had internet access, 16.9% used landline phones, 90.6% used televisions, and 20.8% used radios.

(Figure15) illustrates the distribution of households' ICT access to and usage:

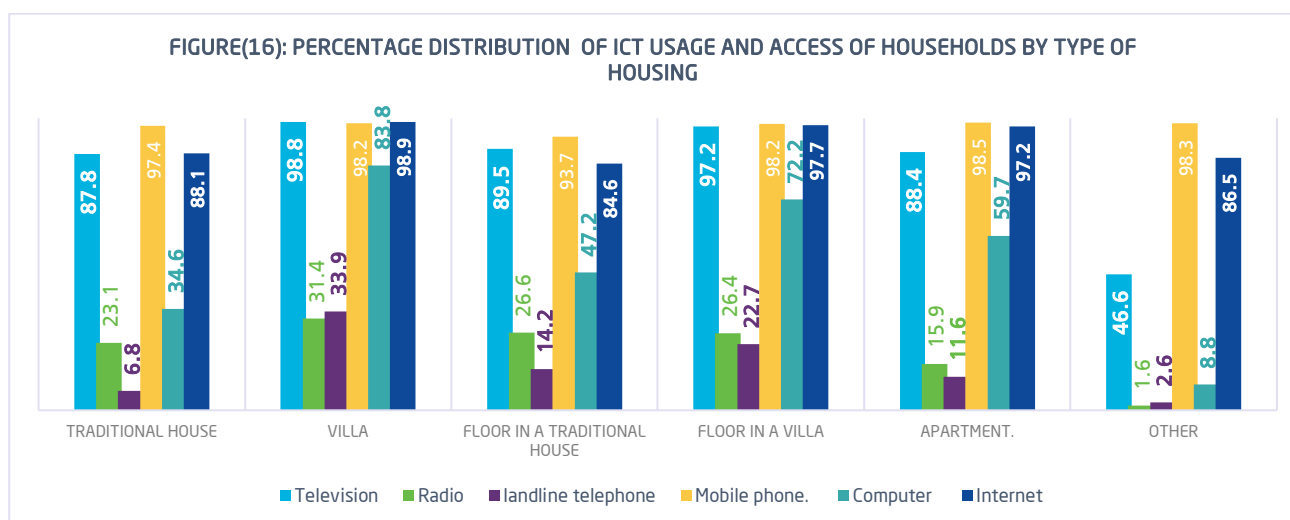


Source: Survey of ICT Access and Usage for Households and Individuals 2022

#### ▪ ICT access and usage for households by type of dwelling

The results of the 2022 ICT Access and Usage Survey for Households and Individuals showed that the highest usage rate of mobile phones was in apartment households, reaching 98.5%. The highest usage rate of computers was found in villa households at 83.8%. The highest internet access rate was also in villa households, at 98.8%. The highest access rate to landline phones was in villa households, with a percentage of 33.9%. Similarly, the highest access rate to televisions was in villa households at 98.8%, and the highest access rate to radios was also in villa households, at 31.4%.

(Figure16) illustrates the distribution of ICT access and usage for households based on dwelling type:



Source: Survey of ICT Access and Usage for Households and Individuals 2022

## Conclusion

Focusing on the family is a key investment in the nation's future. The report highlights that families in Saudi Arabia play a crucial role in creating a strong and unified society. Families in Saudi Arabia have demonstrated their resilience and adaptability, contributing to many achievements across various fields. With the Kingdom's continued efforts to empower and support families, we are optimistic about a prosperous future for both families and society, aligned with the Saudi Vision 2030.

**And God is the Grantor of success..**



الهيئة العامة للإحصاء  
General Authority for Statistics

Saudi Family Statistics  
Report 2024

[stats.gov.sa](https://stats.gov.sa)