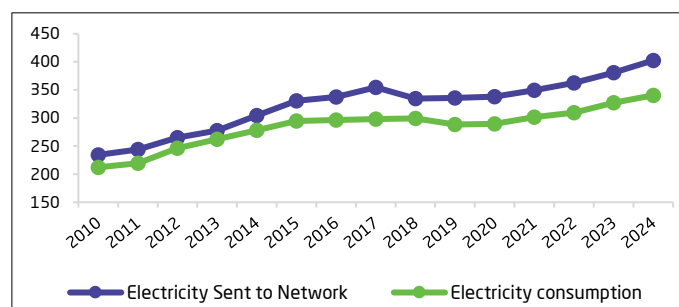


Total amount of electrical energy sent to the network increases by approximately 5.7% in 2024

In 2024, the national grid received more than 402 terawatt-hour of electrical energy, marking a 5.7% increase compared to 2023. Meanwhile, total electrical energy consumption also increased, amounting to over 340 terawatt-hour in 2024, which represents a 4.1% annual growth (Figure 1).

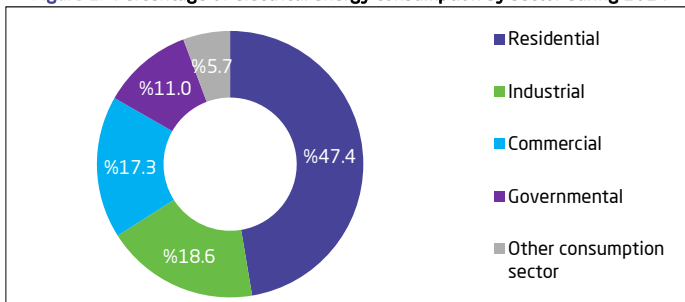
Figure 1. Electrical energy sent to the network and electricity consumption (TWh)



Electrical energy consumption by sector

The residential sector recorded the largest share of total electrical energy consumption at 47.4%, followed by the industrial sector at 18.6%. While the commercial sector accounted for 17.3%, the government sector accounted for 11.0%, and other sectors recorded 5.7% (Figure 2).

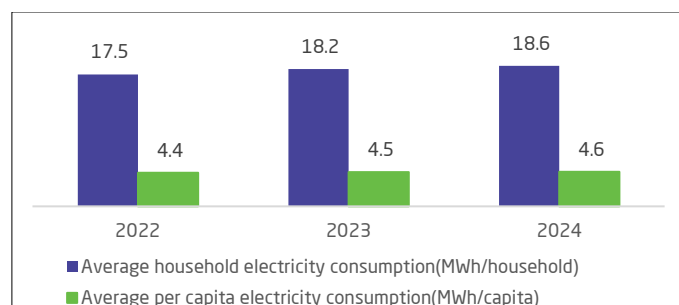
Figure 2. Percentage of electrical energy consumption by sector during 2024



Average residential electrical energy consumption

In 2024, the average annual household electrical energy consumption in the residential sector reached 18.6 megawatt-hour per household, marking an increase of 2.2% compared to 2023. Meanwhile, the average electrical energy consumption per capita exceeded 4 megawatt-hour per capita, increasing by 0.7% from 2023 (Figure 3).

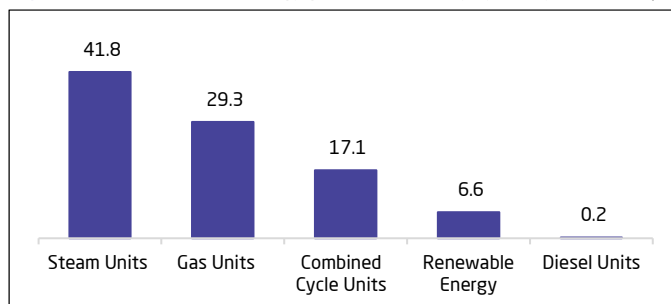
Figure 3. Average annual electrical energy consumption per capita and household for the residential sector



Licensed electrical energy generation capacity by unit type

Steam units accounted for the largest licensed capacity for electricity generation during 2024 at 41.8 gigawatts, followed by gas units with capacity of 29.3 gigawatts. On the other hand, renewable energy recorded a remarkable growth, as the cumulative installed capacity of renewable energy projects increased from 2.8 gigawatts in 2023 to approximately 6.6 gigawatts by the end of 2024 (Figure 4).

Figure 4. Licensed electrical energy generation capacity by unit type in 2024 (GW)



Percentage of electrical energy loss in transmission and distribution network

In 2024, the percentage of electrical energy losses in transmission and distribution networks was 8.5% of the total electrical energy sent to the grid, recording a decline of 10.3% compared to 2023.

Key indicators of electrical energy statistics

Indicators	Unit	2023	2024
Electrical energy sent to the network	GWh	380,878	402,628
Total licensed electrical energy generation capacity	GW	≈91.1	≈92.5
Electrical energy consumption	GWh	≈327,001	≈340,430
Percentage of electrical energy loss in transmission and distribution network	Percentage	%9.5	%8.5
Residential electrical energy consumption indicators			
Average annual electrical energy consumption per capita	kWh/capita	4,533	4,567
Average annual electrical energy consumption per consumer	kWh/consumer	17,186	17,595
Average annual electrical energy consumption per household	kWh/household	18,191	18,590

Source: Tables.

Methodology and quality

The Electrical Energy Statistics Publication is based on administrative records from the Ministry of Energy as its main data source, in addition to administrative record data from the General Authority for Statistics. The data are available as a time series covering the period 2019-2024, and the publication is published annually.

[For more details, please refer to the Methodology and Quality Report](#)