

Real estate prices increase by 1.1% in 2022

The real estate price index increased by 1.1% in 2022 compared to 2021. This development in prices is largely due to the increase in the average prices of the residential sector by 2.1%.

Residential sector prices rose in 2022

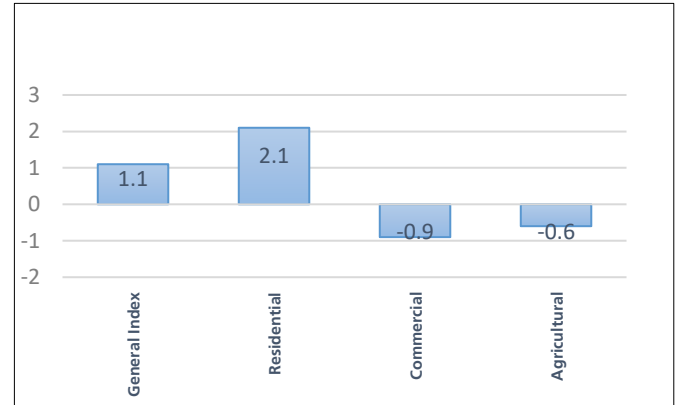
The residential sector increased by 2.1%, affected by the increase in land prices by (2.2%).

Commercial and Agricultural Sectors prices decreased in 2022

Prices for real-estate in the commercial sector decreased by 0.9%, affected by the decrease in the prices of land plots (0.9%) and the prices of exhibitions (-1.2%)

Prices for real-estate in the agricultural sector decreased by 0.6%, affected by the decrease in the prices of agricultural plots (-0.6%).

Annual real estate price index for 2022 (%)



Change of annual real estate price index by section for 2022 (%)

Sector and Type of Real Estate	Average index during the year:		
	2022	2021	Percentage change %
General Index	82.1	81.2	1.1
Residential	86.5	84.7	2.1
Commercial	72.4	73.1	-0.9
Agricultural	92.6	93.2	-0.6

Source: [Tables](#).